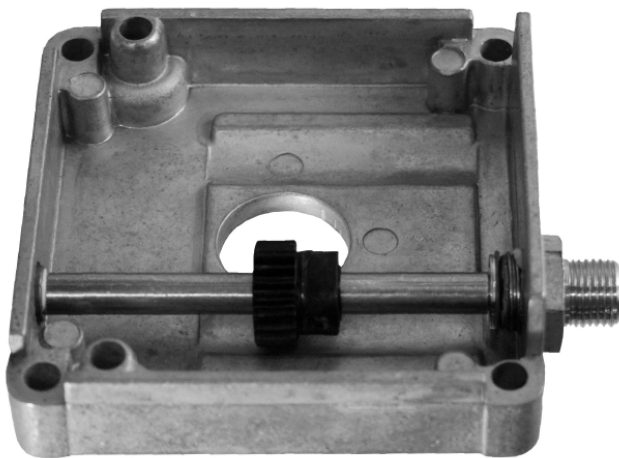
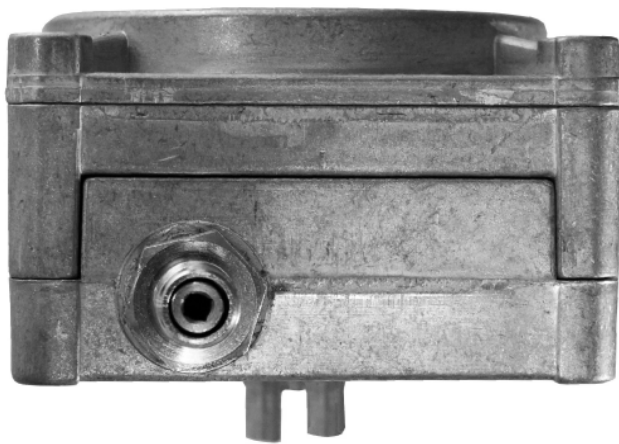


ELTOMATIC

Complete solutions between meter and computer

Totalizer Drive System



Eltomatic A/S • Fabriksvej 6 • DK9490 Pandrup • Denmark

Phone +45 9824 6166 • Fax +45 9824 6310 • www.eltomatic.com • eltomatic@eltomatic.com

EZ2 Integrated system

In fuel dispensers, which must be fitted with a 'non-erasable' totalizer to monitor the total 'pumped' liters, Eltomatic can supply either an integrated totalizer or an integrated gearbox combined with a remote totalizer.

The remote totalizer system consists of:

- Shaft encoder with worm gear
- EZ2 Gearbox
- Flex drive cable or connector set
- Remote totalizer

EZ 2 Integrated Gearbox

The EZ2 gearbox is an add-on unit to be mounted on the shaft encoder 01-08. The gearbox is simply mounted under the shaft encoder and fixed with two screws, ready to be mounted on a meter. The shaft encoder has to be fitted with a worm gear wheel on the coupling shaft to make it possible to drive the gearbox.

Options

Meter mounting	Standard, K90 or to be agreed
Shaft exit hole	ø15, ø18 or ø29
Gearing to shaft	1:1, 2:1, 4:1 or to be agreed

Mechanical Specification

Gearing	To be agreed
Direction of turning	To be agreed
Housing material	Aluminium die cast
Sealing method	To be agreed
Label	None
Marking	None
Flex drive connector	Square hole 2.6 mm/M10 threaded coupling



A sealing wire can be drawn through a sealing tag on the totalizer and the sealing hole on the flex cable union nut.

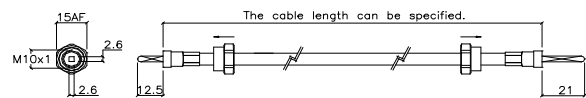
Flex drive cables

The standard program of flex drive cables are available in various lengths from 350 mm to 2650 mm. Standard lengths can be supplied from stock and special lengths can be supplied to order.

Mechanical specification

Lengths in stock 350, 500, 550, 650, 710, 800, 900, 1050, 1070, 1600 mm

Union nuts	M10 with one 1.8 mm sealing hole, AF is 15 mm
Outer cable	Cros woven stainless steel covered with black plastic
Inner cable	Cross woven stainless steel
Inner cable ends	2.6 square pin

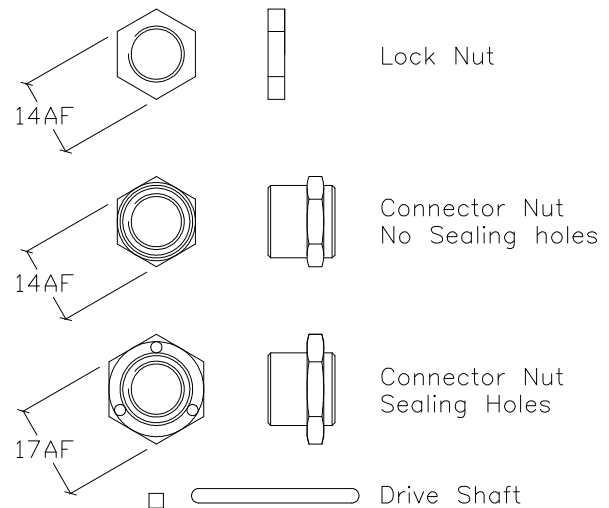


Connector sets

If the totalizer should be mounted directly on to the encoder/gearbox drive output, a connector set can be used. We can supply the connector nut in two versions, with or without holes for sealing wire.

A connector set consists of:

- Connector nut
- Lock nut
- 2.6mm x 30mm intermediate square drive shaft



Mechanical specifications

Lock nut	Nickel plated brass, M10 thread and 14mm AF
Connector nut type 1	Nickel plated brass, M10 thread and 14mm AF No holes for sealing wire
Connector nut type 2	Nickel plated brass, M10 thread and 17mm AF with 3 x 2mm holes for sealing wire
Square drive shaft	Cross-wound spring steel